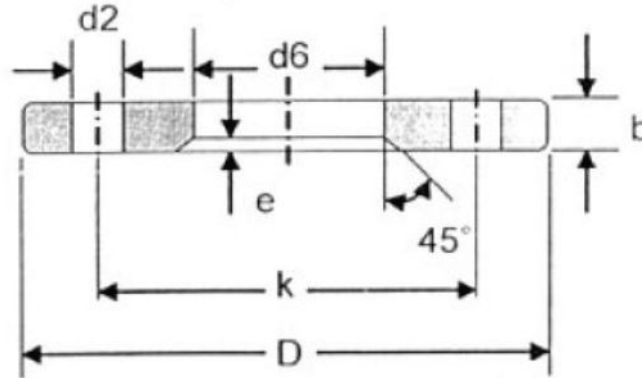


### DIN 2641 Lapped (Lapped Joint) Flange, Plain Collar PN6



| DN   | Pipe OD |      | D    | d6   | b  | k    | e | No. of holes | d2 | KG     |
|------|---------|------|------|------|----|------|---|--------------|----|--------|
|      | ISO     | DIN  |      |      |    |      |   |              |    |        |
| 10   | -       | 14   | 75   | 16   | 10 | 50   | 2 | 4            | 11 | 0.3    |
|      | 17.2    | -    | 75   | 19   | 10 | 50   | 2 | 4            | 11 | 0.29   |
| 15   | -       | 20   | 80   | 22   | 10 | 55   | 2 | 4            | 11 | 0.33   |
|      | 21.3    | -    | 80   | 24   | 10 | 55   | 2 | 4            | 11 | 0.33   |
| 20   | -       | 25   | 90   | 28   | 10 | 65   | 2 | 4            | 11 | 0.42   |
|      | 26.9    | -    | 90   | 30   | 10 | 65   | 2 | 4            | 11 | 0.41   |
| 25   | -       | 30   | 100  | 33   | 12 | 75   | 3 | 4            | 11 | 0.62   |
|      | 33.7    | -    | 100  | 36   | 12 | 75   | 3 | 4            | 11 | 0.61   |
| 32   | -       | 38   | 120  | 42   | 12 | 90   | 3 | 4            | 14 | 0.88   |
|      | 42.4    | -    | 120  | 46   | 12 | 90   | 3 | 4            | 14 | 0.85   |
| 40   | -       | 44.5 | 130  | 50   | 12 | 100  | 3 | 4            | 14 | 1.01   |
|      | 48.3    | -    | 130  | 54   | 12 | 100  | 3 | 4            | 14 | 0.98   |
| 50   | -       | 57   | 140  | 62   | 12 | 110  | 3 | 4            | 14 | 1.11   |
|      | 60.3    | -    | 140  | 65   | 12 | 110  | 3 | 4            | 14 | 1.08   |
| 65   | 76.1    | -    | 160  | 81   | 12 | 130  | 3 | 4            | 14 | 1.35   |
| 80   | 88.9    | -    | 190  | 94   | 14 | 150  | 3 | 4            | 18 | 2.24   |
| 100  | -       | 108  | 210  | 113  | 14 | 170  | 3 | 4            | 18 | 2.59   |
|      | 114.3   | -    | 210  | 119  | 14 | 170  | 3 | 4            | 18 | 2.47   |
| 125  | -       | 133  | 240  | 138  | 14 | 200  | 3 | 8            | 18 | 3.1    |
|      | 139.7   | -    | 240  | 145  | 14 | 200  | 3 | 8            | 18 | 2.93   |
| 150  | -       | 159  | 265  | 164  | 14 | 225  | 3 | 8            | 18 | 3.52   |
|      | 168.3   | -    | 265  | 173  | 14 | 225  | 3 | 8            | 18 | 3.25   |
| 200  | 219.1   | -    | 320  | 225  | 16 | 280  | 3 | 8            | 18 | 4.85   |
| 250  | -       | 267  | 375  | 273  | 20 | 335  | 3 | 12           | 18 | 7.67   |
|      | 273     | -    | 375  | 279  | 20 | 335  | 3 | 12           | 18 | 7.26   |
| 300  | 323.9   | -    | 440  | 329  | 24 | 395  | 4 | 12           | 22 | 11.77  |
| 350  | 355.6   | -    | 490  | 362  | 26 | 445  | 4 | 12           | 22 | 16.55  |
|      | -       | 368  | 490  | 374  | 26 | 445  | 4 | 12           | 22 | 15.13  |
| 400  | 406.4   | -    | 540  | 413  | 28 | 495  | 4 | 16           | 22 | 19.56  |
|      | -       | 419  | 540  | 426  | 28 | 495  | 4 | 16           | 22 | 17.67  |
| 500  | 508     | -    | 645  | 517  | 32 | 600  | 4 | 20           | 22 | 27.43  |
| 600  | 610     | -    | 755  | 618  | 36 | 705  | 4 | 20           | 26 | 38.75  |
| 700  | 711     | -    | 860  | 721  | 40 | 810  | 4 | 24           | 26 | 50.19  |
| 800  | 813     | -    | 975  | 824  | 44 | 920  | 4 | 24           | 30 | 67.83  |
| 900  | 914     | -    | 1075 | 926  | 48 | 1020 | 4 | 24           | 30 | 81.84  |
| 1000 | 1016    | -    | 1175 | 1028 | 52 | 1120 | 4 | 28           | 30 | 95.74  |
| 1200 | 1220    | -    | 1405 | 1232 | 60 | 1340 | 5 | 32           | 33 | 155.87 |

Dimensions in millimeter (mm).