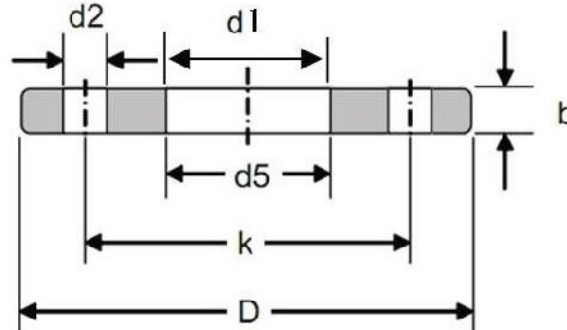


DIN 2502 Flat Flange For Welding (Slip On) PN16



DN	ISO	DIN (d1)	d5	D	b	k	No. of Holes	d2	KG
10	-	14.0	14.5	90	16	60	4	14	0.61
	17.2	-	17.7	90	16	60	4	14	0.60
15	-	20.0	21.0	95	16	65	4	14	0.67
	21.3	-	22.0	95	16	65	4	14	0.67
20	-	25.0	26.0	105	18	75	4	14	0.94
	26.9	-	27.6	105	18	75	4	14	0.94
25	-	30.0	31.0	115	18	85	4	14	1.13
	33.7	-	34.4	115	18	85	4	14	1.11
32	-	38.0	39.0	140	18	100	4	18	1.66
	42.4	-	43.1	140	18	100	4	18	1.62
40	-	44.5	45.5	150	18	110	4	18	1.89
	48.3	-	49.0	150	18	110	4	18	1.85
50	-	57.0	58.1	165	18	125	4	18	2.50
	60.3	-	61.1	165	18	125	4	18	2.46
65	76.1	-	77.1	185	22	145	8	18	2.99
80	88.9	-	90.3	200	24	160	8	18	3.61
100	-	108.0	109.6	220	20	180	8	18	4.17
	114.3	-	115.9	220	20	180	8	18	3.99
125	-	133.0	134.8	250	22	210	8	18	5.66
	139.7	-	141.6	250	22	210	8	18	5.41
150	-	159.0	161.1	285	22	240	8	22	6.97
	168.2	-	170.5	285	22	240	8	22	6.55
175	193.7	-	196.10	315	24	270	8	22	8.42
200	219.1	-	221.8	340	24	295	12	22	8.97
250	-	267.0	270.2	405	26	355	12	26	13.29
	273.0	-	276.2	405	26	355	12	26	12.76
300	323.9	-	327.6	460	28	410	12	26	16.60
350	355.6	-	359.7	520	30	470	16	26	24.08
	-	368	372.2	520	30	470	16	26	22.39
400	406.4	-	411.0	580	32	525	16	30	30.20
	-	419	423.7	580	32	525	16	30	28.11
450	457.0	-	462.3	640	38	585	20	30	41.67
500	508.0	-	513.6	715	38	650	20	33	52.87
600	610.0	-	616.5	840	42	770	20	36	77.58
700	711.0	-	716.0	910	44	840	24	36	77.13
800	813.0	-	818.0	1025	50	950	24	39	106.35
900	914.0	-	920.0	1125	54	1050	28	39	125.39
1000	1016.0	-	1022.0	1255	60	1170	28	42	177.99

Dimensions in millimeter (mm).
For DN10-DN80 use PN40.