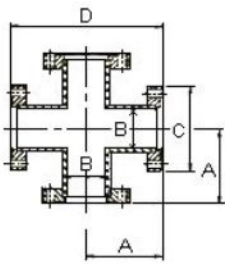


## CF Flanges & Components

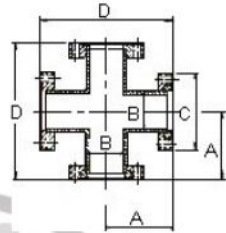
Dimension (mm)

### CF 4 Way Cross - Fixed



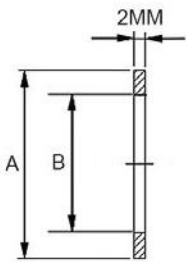
Model No.	A	B	C	D
4C-CF16	38	19.05	33.8	76
4C-CF35	63	38.1	69.5	126
4C-CF63	105	63.5	113.6	210
4C-CF100	135	101.6	151.6	270
4C-CF150	167	152.4	202.5	334
4C-CF200	203	203.2	253.2	406

### CF 4 Way Cross – 2 Flange Rotatable



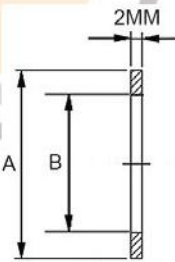
Model No.	A	B	C	D
4C-CR16	38	19.05	33.8	76
4C-CR35	63	38.1	69.5	126
4C-CR63	105	63.5	113.6	210
4C-CR100	135	101.6	151.6	270
4C-CR150	167	152.4	202.5	334
4C-CR200	203	203.2	253.2	406

### CF Copper Gasket



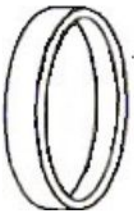
Model No.	A	B
CG-CF16	21	16
CG-CF35	48	37
CG-CF63	82	63
CG-CF100	120	101
CG-CF150	171	152
CG-CF200	222	203
CG-CF250	272.7	254

### CF Silver Plated Copper Gasket



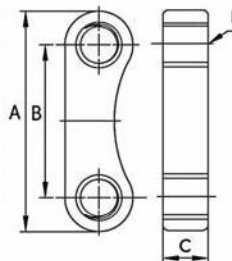
Model No.	A	B
CGS-CF16	21	16
CGS-CF35	48	37
CGS-CF63	82	63
CGS-CF100	120	101
CGS-CF150	171	152
CGS-CF200	222	203
CGS-CF250	272.7	254

### CF Flange Cap



Model No.	Suitable Flange
C-CF63	CF63
C-CF100	CF100
C-CF150	CF150
C-CF200	CF200
C-CF250	CF250
C-CF300	CF300
C-CF350	CF350
C-CF400	CF400
C-CF500	CF500

### CF Plate Nut



Model No.	A	B	C	D
N-CF16	19.5	13.5	4	M4
N-CF35	39.5	29.5	6	M6
N-CF63	50.2	35.2	8	M8