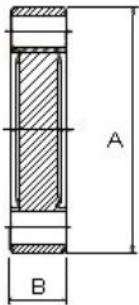


CF Flanges & Components

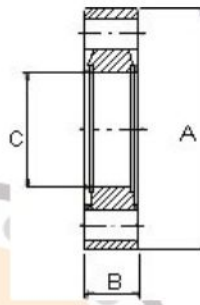
Dimension (mm)

CF Double Side Blank Flange



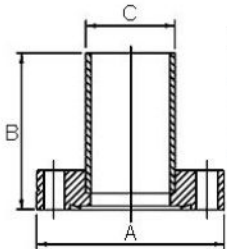
Model No.	A	B
DSBL-CF16	33.8	7.5
DSBL-CF35	69.5	12.7
DSBL-CF63	113.6	18.0
DSBL-CF100	151.6	20.0
DSBL-CF150	202.5	22.0
DSBL-CF200	253.2	24.7
DSBL-CF250	336.55	28.5
DSBL-CF300	355.6	28.5
DSBL-CF350	419.1	28.5

CF Double Side Bored Flange



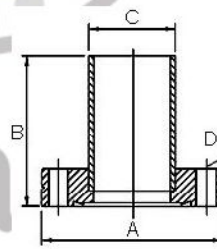
Model No.	A	B	C
DSBF-CF16	33.8	7.5	16.0
DSBF-CF35	69.5	12.7	35.5
DSBF-CF63	113.6	18.0	60.4
DSBF-CF100	151.6	20.0	97.5
DSBF-CF150	202.5	22.0	147.6
DSBF-CF200	253.2	24.7	198.9
DSBF-CF250	336.55	28.5	250.0
DSBF-CF300	355.6	28.5	298.45
DSBF-CF350	419.1	28.5	349.25

CF Half Nipple, Fixed



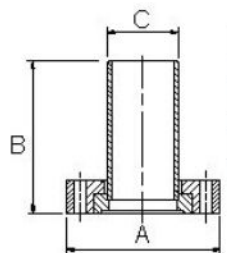
Model No.	A	B	C
HN-CF16	33.8	38.1	19.05
HN-CF35	69.5	62.5	38.1
HN-CF63	113.6	104.6	63.5
HN-CF100	151.6	135.0	101.6
HN-CF150	202.5	166.6	152.4
HN-CF200	253.2	203.2	203.2

CF Half Nipple with Tapped Flange, Fixed



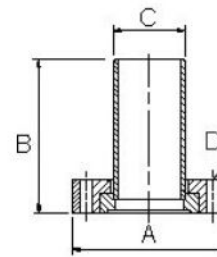
Model No.	A	B	C	D
HN-CFT16	33.8	38.1	19.05	M4
HN-CFT35	69.5	62.5	38.1	M6
HN-CFT63	113.6	104.6	63.5	M8
HN-CFT100	151.6	135.0	101.6	M8
HN-CFT150	202.5	166.6	152.4	M8
HN-CFT200	253.2	203.2	203.2	M8

CF Half Nipple, Rotatable



Model No.	A	B	C
HN-CR16	33.8	38.1	19.05
HN-CR35	69.5	62.5	38.1
HN-CR63	113.6	104.6	63.5
HN-CR100	151.6	135.0	101.6
HN-CR150	202.5	166.6	152.4
HN-CR200	253.2	203.2	203.2

CF Half Nipple with Tapped Flange, Rotatable



Model No.	A	B	C	D
HN-CRT16	33.8	38.1	19.05	M4
HN-CRT35	69.5	62.5	38.1	M6
HN-CRT63	113.6	104.6	63.5	M8
HN-CRT100	151.6	135.0	101.6	M8
HN-CRT150	202.5	166.6	152.4	M8
HN-CRT200	253.2	203.2	203.2	M8