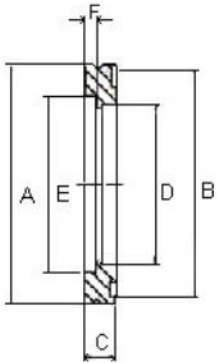


ISO Flanges & Components

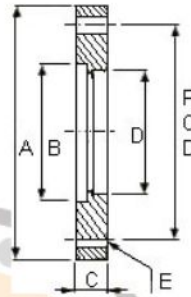
Dimension (mm)

ISO Bored Flange



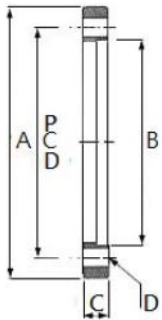
Model No.	A	B	C	D	E	F
IBF-63	95	90	12	63.7	70	4.5
IBF-80	110	105	12	76.4	83	4.5
IBF-100	130	125	12	101.8	102	4.5
IBF-160	180	175	12	152.9	153	4.5
IBF-200	240	235	12	203.7	213	4.5
IBF-250	290	285	12	254.5	261	4.5
IBF-320	370	365	17	305.3	318	4.5
IBF-400	450	445	17	406.9	400	4.5
IBF-500	550	545	17	508.8	501	4.5

ISO Bolted Flange



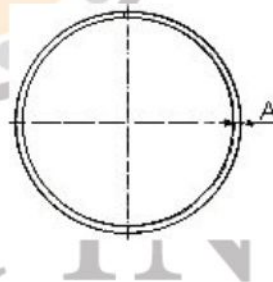
Model No.	A	B	C	D	E	P.C.D
IBTF-63	130	70	12	63.7	9x4	110
IBTF-80	145	83	12	76.4	9x8	125
IBTF-100	165	102	12	101.8	9x8	145
IBTF-160	225	153	16	152.9	11x8	200
IBTF-200	285	213	16	203.7	11x12	260
IBTF-250	335	261	16	254.5	11x12	310
IBTF-320	425	318	20	305.3	14x12	395
IBTF-400	510	400	20	406.9	14x16	480
IBTF-500	610	510	20	508.8	14x16	580

ISO Rotatable Bolt Ring



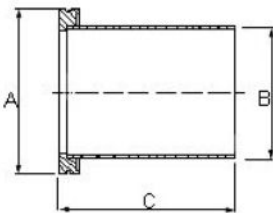
Model No.	A	B	C	D	P.C.D.
IRBR-63	130	98.5	12	9x4	110
IRBR-80	145	113.5	12	9x8	125
IRBR-100	165	133.5	12	9x8	145
IRBR-160	225	185.7	16	11x8	200
IRBR-200	285	245.7	16	11x12	260
IRBR-250	335	295.7	16	11x12	310
IRBR-320	425	375.8	20	14x12	395
IRBR-400	510	458.8	20	14x16	480
IRBR-500	610	558.8	20	14x16	580

ISO Split Retainer Ring



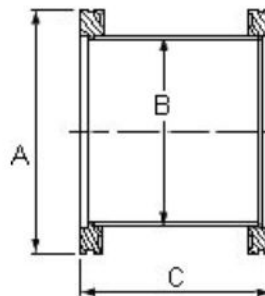
Model No.	A	P.C.D.
ISR-63	3	ISO63
ISR-80	3	ISO80
ISR-100	3	ISO100
ISR-160	5	ISO160
ISR-200	5	ISO200
ISR-250	5	ISO250
ISR-320	5	ISO320
ISR-400	8	ISO400
ISR-500	8	ISO500

ISO Half Nipple



Model No.	A	B	C
IWF-63	95	63.5	100
IWF-80	110	76.2	100
IWF-100	130	101.6	100
IWF-160	180	152.4	100
IWF-200	240	203.2	100
IWF-250	290	254.0	100
IWF-320	370	304.8	200
IWF-400	450	406.4	200
IWF-500	550	508.0	200

ISO Full Nipple



Model No.	A	B	C
INI-63	95	63.5	100
INI-80	110	76.2	100
INI-100	130	101.6	100
INI-160	180	152.4	100
INI-200	240	203.2	100
INI-250	290	254.0	100
INI-320	370	304.8	200
INI-400	450	406.4	200
INI-500	550	508.0	200