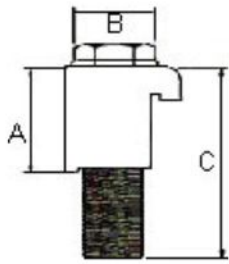


ISO Flanges & Components

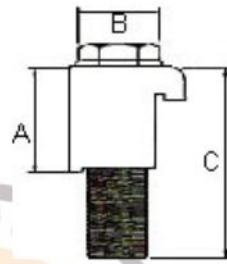
Dimension (mm)

ISO Single Wall Clamp Aluminum



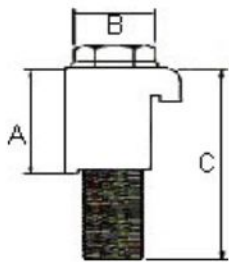
Model No.	A	B	C
ISC-AL-63/100	23.5	M8	35
ISC-AL-160/250	23.5	M10	35
ISC-AL-320/500	30.0	M12	50

ISO Single Wall Clamp Steel, Zinc Plated



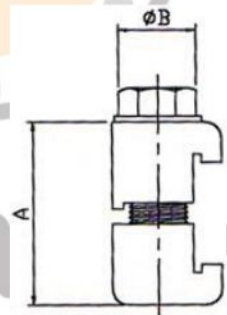
Model No.	A	B	C
ISC-SZ-63/100	23.5	M8	35
ISC-SZ-160/250	23.5	M10	35
ISC-SZ-320/500	30.0	M12	50

ISO Single Wall Clamp SS304



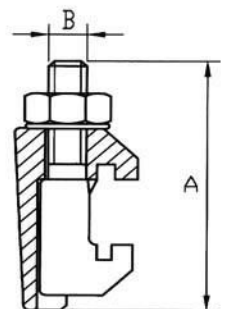
Model No.	A	B	C
ISC-63/100	23.5	M8	35
ISC-160/250	23.5	M10	35
ISC-320/500	30.0	M12	50

ISO Double Wall Clamp Aluminum



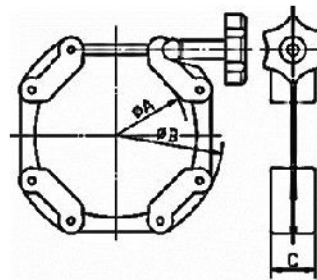
Model No.	A	B
IDC-63/100	45.0	M8
IDC-160/250	45.0	M10
IDC-320/500	60.0	M12

ISO Double Wall Clamp SS304



Model No.	A	B
IDC-63/250	61.5	M10
IDC-320/500	76.0	M12
IDC-630	86.0	M12

ISO Chain Clamp Aluminum, Knob: ABS



Model No.	A	B	C
CCP-63	78	112	20.5