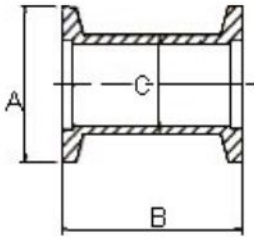


KF Flanges & Components

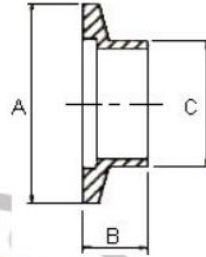
Dimension (mm)

KF Nipple



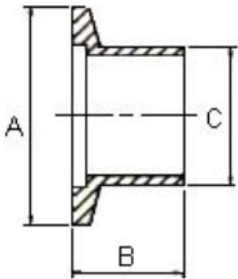
Model No.	A	B	C
NI-16	30	80	19.05
NI-25	40	100	25.40
NI-40	55	130	38.10
NI-50	75	140	50.80

KF Half Nipple Short - USA



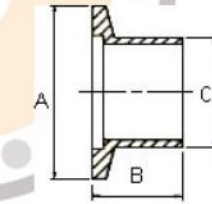
Model No.	A	B	C
SWFA-10	30	12.7	12.70
SWFA-16	30	12.7	19.05
SWFA-25	40	12.7	26.40
SWFA-40	55	19.1	38.10
SWFA-50	75	19.1	50.80

KF Half Nipples Short – Europe



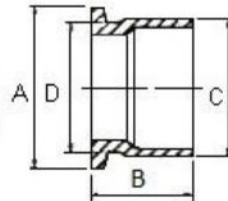
Model No.	A	B	C
SWFE-10	30	20	14
SWFE-16	30	20	20
SWFE-25	40	20	28
SWFE-40	55	20	45
SWFE-50	75	20	57

KF Half Nipples Short – Japan



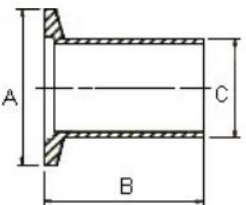
Model No.	A	B	C
SWFJ-25-27	40	20	27.2
SWFJ-40-42	55	20	42.7
SWFJ-50-60	75	20	60.5

Delta



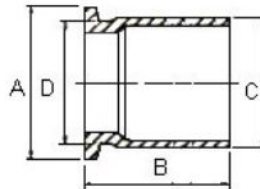
Model No.	A	B	C	D
SWFJ-25-34	40	20	34.0	32
SWFJ-40-48	55	20	48.6	45

KF Half Nipples Long – USA

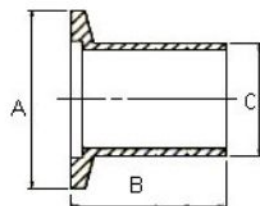


Model No.	A	B	C
LWFA-10	30	40	12.70
LWFA-16	30	40	19.05
LWFA-25	40	40	25.40
LWFA-40	55	40	38.10
LWFA-50	75	40	50.80

KF Half Nipples Long – Japan



Model No.	A	B	C	D
LWFA-10	30	40	12.70	
LWFA-16	30	40	19.05	
LWFA-25	40	40	25.40	
LWFA-40	55	40	38.10	
LWFA-50	75	40	50.80	
LWFJ-25	40	50	34.0	32
LWFJ-40	55	50	48.6	45



Model No.	A	B	C
LWFJ-50	75	50	60.5