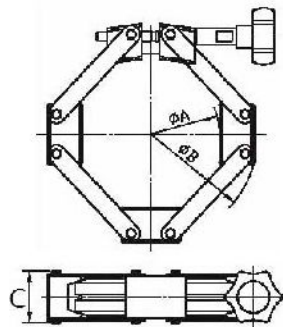


KF Flanges & Components

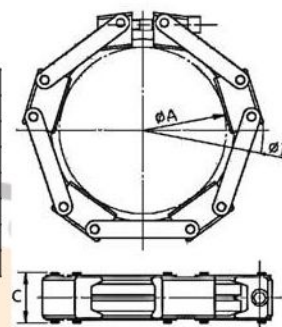
Dimension (mm)

Aluminum Chain Clamp, Knob:Nylon Fiber, Body: A6061T6-Hard Anodizing



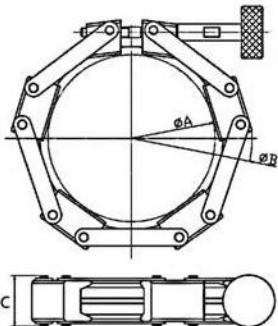
Model No.	A	B	C
CCP-80	100.0	165.0	38
CCP-100	122.0	185.0	38
CCP-125	162.0	205.0	38
CCP-160	174.0	235.0	38
	178.5	231.5	38
CCP-200	240.0	293.0	38
CCP-250	289.0	301.0	38

Aluminum Chain Clamp, Bolt:SUS304, Body: A6061T6-Hard Anodizing



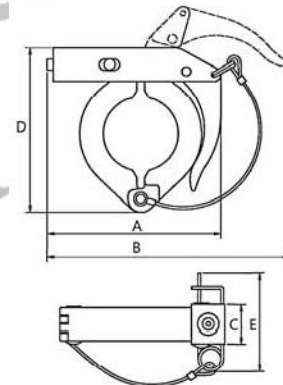
Model No.	A	B	C
CCPB-80	100.0	165.0	38
CCPB-100	122.0	185.0	38
CCPB-125	162.0	205.0	38
CCPB-160	174.0	235.0	38
	178.5	231.5	38
CCPB-200	240.0	293.0	38
CCPB-250	289.0	301.0	38

Aluminum Chain Clamp, Knob:SUS304, Body: A6061T6-Green Anodizing



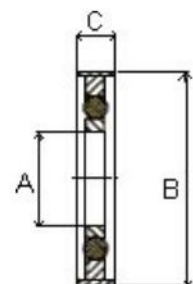
Model No.	A	B	C
CCPG-80	100.0	165.0	38
CCPG-100	122.0	185.0	38
CCPG-125	162.0	205.0	38
CCPG-160	174.0	235.0	38
	178.5	231.5	38
CCPG-200	240.0	293.0	38
CCPG-250	289.0	301.0	38

KF Aluminum Toggle Clamp with Lanyard, Body & Bar: ADC12, Lock Case & Pin: SUS304, Spring: SWC+Electro Deposition



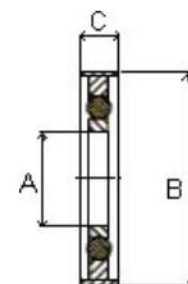
Model No.	A	B	C	D	E
TC-16	69	97	20	63	43
TC-25	75	106	20	74	43
TC-40	85	123	20	90	43
TC-50	118	165	23	115	43

KF Aluminum Outer Ring, 304 Centering Ring, Viton O'ring



Model No.	A	B	C	O'ring
OCRV-AL16	16	32.5	8	5018
OCRV-AL25	25	42.5	8	5028
OCRV-AL40	40	57.5	8	5042
OCRV-AL50	50	77.5	8	AS-330

KF 304 Outer Ring, 304 Centering Ring, Viton O'ring



Model No.	A	B	C	O'ring
OCRV-16	16	32.5	8	5018
OCRV-25	25	42.5	8	5028
OCRV-40	40	57.5	8	5042
OCRV-50	50	77.5	8	AS-330