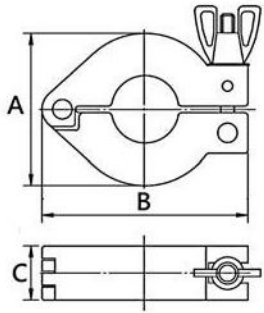


KF Flanges & Components

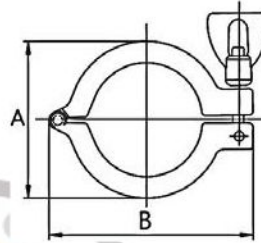
Dimension (mm)

KF Aluminum Single Pin Clamp



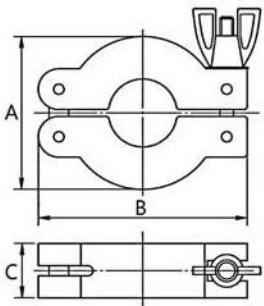
Model No.	Material	A	B	C
CP-16	ADC12	41.0	63.0	17.5
CP-25	ADC12	52.5	72.0	17.5
CP-40	ADC12	70.0	90.0	17.5
CP-50	ADC12	89.0	113.5	20.0

KF 304 Single Pin Clamp



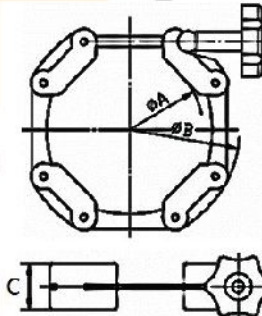
Model No.	A	B
SCP-4-16	42.5	63
SCP-4-25	54.0	72
SCP-4-40	70.0	90
SCP-4-50	90.0	114

KF Aluminum Double Pin Clamp



Model No.	Material	A	B	C
CPP-16	ADC12	42.0	62.0	16.5
CPP-25	ADC12	53.5	72.0	16.5
CPP-40	ADC12	69.0	89.5	16.5
CPP-50	ADC12	90.0	113.0	20.0

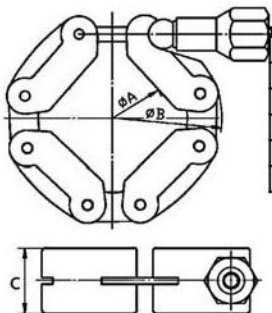
KF Aluminum Chain Clamp, Knob:ABS



Model No.	Material	A	B	C
CCP-16	ADC12	22	56	20.5
CCP-25	ADC12	32	66	20.5
CCP-40	ADC12	46	80	20.5
CCP-50	ADC12	69	100	20.5
CCP-63	ADC12	78	112	20.5

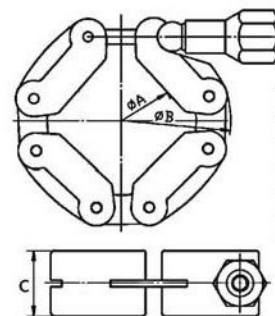
KF Aluminum Chain Clamp,

Nut:Steel+Zn Plated



Model No.	Material	A	B	C
CCP-16N	ADC12	22	56	20.5
CCP-25N	ADC12	32	66	20.5
CCP-40N	ADC12	46	80	20.5
CCP-50N	ADC12	69	100	20.5
CCP-63N	ADC12	78	112	20.5

KF 304 Chain Clamp, Nut:304



Model No.	A	B	C
CCP-4-16	22	56	20.5
CCP-4-25	32	66	20.5
CCP-4-40	46	80	20.5
CCP-4-50	69	100	20.5
CCP-4-63	78	112	20.5