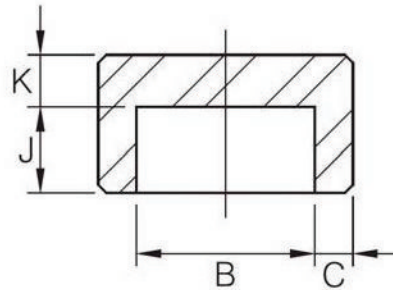


### Cap Socket Weld



DN	Nom. Pipe Size	Socket Bore Dia. B	Bore Dia. Of Fitting D			Socket Wall Thickness C <sup>(1)</sup>						Depth of Socket (Min) J	End Wall Thickness (Min) K		
						3M		6M		9M			3M	6M	9M
			3M	6M	9M	Avg	Min	Avg	Min	Avg	Min				
6	1/8"	10.8	6.9	4.0	-	3.18	3.18	3.96	3.43	-	-	9.5	4.8	6.4	-
8	1/4"	14.2	9.3	6.4	-	3.78	3.30	4.60	4.01	-	-	9.5	4.8	6.4	-
10	3/8"	17.6	12.6	9.2	-	4.01	3.50	5.03	4.37	-	-	9.5	4.8	6.4	-
15	1/2"	21.8	15.8	11.8	6.4	4.67	4.09	5.97	5.18	9.35	8.18	9.5	6.4	7.9	11.2
20	3/4"	27.2	21.0	15.6	11.1	4.90	4.27	6.96	6.04	9.78	8.56	12.5	6.4	7.9	12.7
25	1"	33.9	26.7	20.7	15.2	5.69	4.98	7.92	6.93	11.38	9.96	12.5	9.6	11.2	14.2
32	1-1/4"	42.7	35.1	29.5	22.8	6.07	5.28	7.92	6.93	12.14	10.62	12.5	9.6	11.2	14.2
40	1-1/2"	48.8	40.9	34.0	28.0	6.35	5.54	8.92	7.80	12.70	11.12	12.5	11.2	12.7	15.7
50	2"	61.2	52.5	42.9	38.2	6.93	6.04	10.92	9.50	13.84	12.12	16.0	12.7	15.7	19.0
65	2-1/2"	73.9	62.7	-	-	8.76	7.67	-	-	-	-	16.0	15.7	19.0	-
80	3"	89.8	78.0	-	-	9.52	8.30	-	-	-	-	16.0	19.0	22.4	-
100	4"	115.2	102.3	-	-	10.69	9.35	-	-	-	-	19.0	22.4	28.4	-

- (1) Average of socket wall thickness around periphery shall be no less than listed values. The minimum values are permitted in localized areas.
- (2) 3M, 6M and 9M denote 3000Lb, 6000Lb and 9000Lb.
- (3) Dimensions in accordance with ASME B16.11-2011.