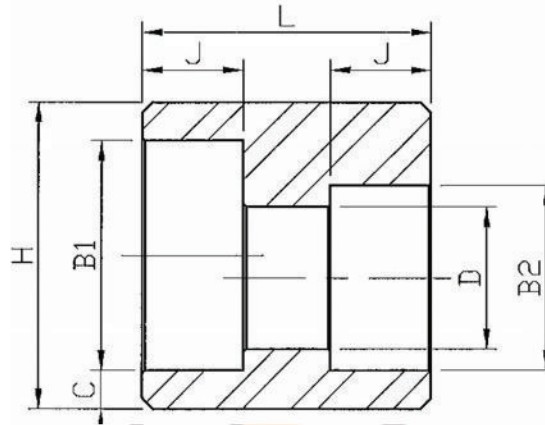


### Eccentric Reducer Coupling Socket Weld



3000Lb

Nom. Pipe Size	B1	B2	D	C (Min)	H	J	L
1/4"x1/8"	14.3	10.9	6.9	3.80	22.2	10.5	27.5
3/8"x1/8"	17.7	10.9	6.9	4.05	26.1	10.5	28.5
3/8"x1/4"	17.7	14.3	9.3	4.05	25.1	10.5	28.5
1/2"x1/4"	21.9	14.3	9.3	4.70	31.6	12.5	34.5
1/2"x3/8"	21.9	17.7	12.6	4.70	31.6	12.5	34.5
3/4"x3/8"	27.3	17.7	12.6	4.90	37.4	14.0	37.5
3/4"x1/2"	27.3	21.9	15.8	4.90	37.4	14.0	37.5
1"x3/8"	34.0	17.7	12.6	5.70	45.7	15.0	43.0
1"x1/2"	34.0	21.9	15.8	5.70	45.7	15.0	43.0
1"x3/4"	34.0	27.3	21.0	5.70	45.7	15.0	43.0
1-1/4"x1/2"	42.8	21.9	15.8	6.10	55.3	17.0	47.0
1-1/4"x3/4"	42.8	27.3	21.0	6.10	55.3	17.0	47.0
1-1/4"x1"	42.8	34.0	26.7	6.10	55.3	17.0	47.0
1-1/2"x1/2"	48.9	21.9	15.8	6.40	62.5	17.5	48.0
1-1/2"x3/4"	48.9	27.3	21.0	6.40	62.5	17.5	48.0
1-1/2"x1"	48.9	34.0	26.7	6.40	62.5	17.5	48.0
1-1/2"x1-1/4"	48.9	42.8	35.1	6.40	62.5	17.5	48.0
2"x1"	61.4	34.0	26.7	6.95	75.6	22.0	63.0
2"x1-1/4"	61.4	42.8	35.1	6.95	75.6	22.0	63.0
2"x1-1/2"	61.4	48.9	40.9	6.95	75.6	22.0	63.0
2-1/2"x1-1/4"	74.1	42.8	35.1	8.80	92.0	22.0	63.0
2-1/2"x1-1/2"	74.1	48.9	40.9	8.80	92.0	22.0	63.0
2-1/2"x2"	74.1	61.4	52.5	8.80	92.0	22.0	63.0
3"x1-1/2"	90.0	48.9	40.9	9.55	109.4	22.0	63.0
3"x2"	90.0	61.4	52.5	9.55	109.4	22.0	63.0
3"x2-1/2"	90.0	74.1	62.7	9.55	109.4	22.0	63.0
4"x2"	115.4	61.4	52.5	10.70	137.1	22.0	63.0
4"x2-1/2"	115.4	74.1	62.7	10.70	137.1	22.0	63.0
4"x3"	115.4	90.0	78.0	10.70	137.1	22.0	63.0

(1) Dimensions in accordance with ASME B16.11-2011.