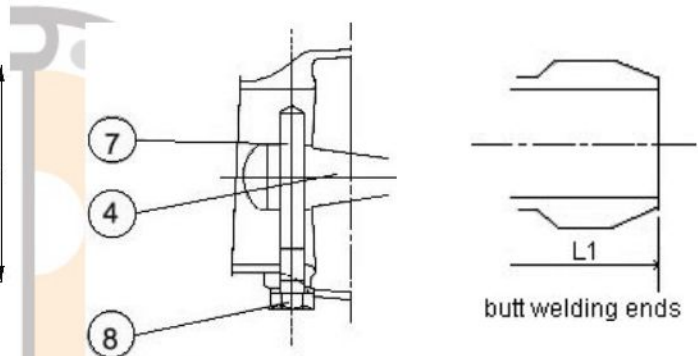
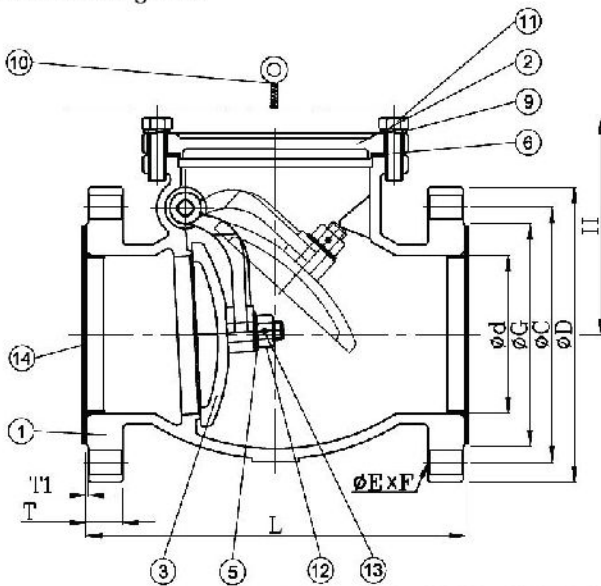


### Cast Stainless Steel Check Valve Flanged PN16

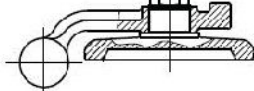
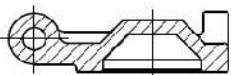
**Feature**

- Shell Wall Thickness: ANSI B16.34
- Face to Face DIN 3202-1977
- End Flanges DIN 2543-1977
- Bolted cover
- Swing type
- For horizontal lines
- Flanged ends
- Butt welding ends



Disc type: DN15-DN80

DN100-DN300



**Test Pressure To API 598**

	PN16
Shell Test (Water)	340 PSI (24kg/cm <sup>2</sup> )
Seat Test (Water)	250 PSI (18 kg/cm <sup>2</sup> )
Seat Test (Air)	80 PSI (6 kg/cm <sup>2</sup> )

**Material List**

NO.	PART NAME	MATERIAL		
		304SS	316SS	316L
1	BODY	1.4308	1.4408	1.4409
2	COVER	1.4308	1.4408	1.4409
3	DISC	1.4308	1.4408	1.4409
4	SWING ARM	1.4308	1.4408	1.4409
5	WASHER	SUS304	SUS316	SUS316L
6	GASKET	GRAPHITE/PTFE		
7	HINGE PIN	SUS304	SUS316	SUS316L
8	PLUG	SUS304	SUS316	SUS316L
9	SPRING WASHER	SUS304		
10	EYE BOLT	SUS304		
11	COVER BOLT	A193-B8		
12	NUT	A194-8		
13	PIN	SUS304	SUS316	SUS316L
14	COVER	PE		

**Dimension**

in millimeter ( mm)

DN	NPS	Ø d	L	H	Ø D	Ø C	Ø G	T	T1	Ø E	F
15	1/2"	15	130	57	95	65	45	14	2	14	4
20	3/4"	20	150	58	105	75	58	16	2	14	4
25	1"	25	160	68	115	85	68	16	2	14	4
32	1-1/4"	32	180	75	140	100	78	16	2	18	4
40	1-1/2"	40	200	80	150	110	88	16	3	18	4
50	2"	50	230	102	165	125	102	20	3	18	4
65	2-1/2"	65	290	120	185	145	122	18	3	18	8
80	3"	80	310	125	200	160	138	20	3	18	8
100	4"	100	350	168	220	180	158	20	3	18	8
125	5"	125	400	178	250	210	188	22	3	18	8
150	6"	150	480	200	285	240	212	22	3	23	8
200	8"	200	600	235	340	295	268	24	3	23	12
250	10"	250	622	350	405	355	320	26	3	27	12
300	12"	300	699	380	460	410	378	28	4	27	12